



European  
University  
Institute

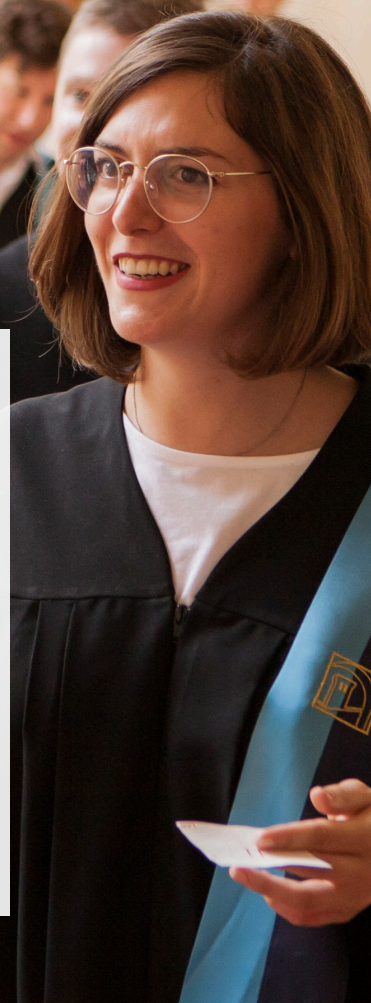
## European roots, global reach

### Making sense of an ever-changing world

The European University Institute, situated in the hills above Florence, Italy, is a unique place to study our world of shifting economic, social and power relations.

Taking an international perspective, top experts in the social sciences share their knowledge with upcoming researchers in state-of-the-art facilities that inspire study and exchange.

The Institute offers exciting research and learning opportunities at Ph.D., post-doctoral, master and executive training level. Over the years, thousands of EUI alumni have gone on to achieve great things in academia, policy and business.



# Interdisciplinary research

The EUI's interdisciplinary research groups focus on:

## 1 Democracy in the 21st century

Interdisciplinary inquiry on the making and conditions of democracy in the 21st century.

## 2 Inequality, welfare and social justice

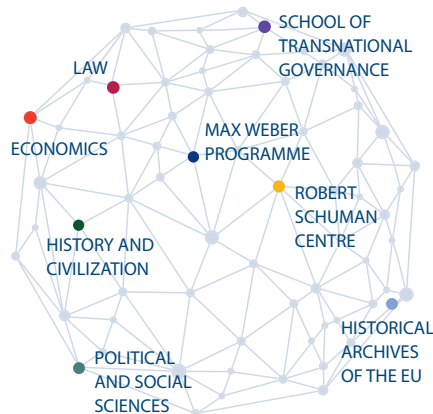
Engagement with theories of justice and solidarity to foster a wider debate over policy ideas and solutions to contain and overcome the inequality conundrum in rich democracies.

## 3 Crisis of expert knowledge and authority

Investigation into why experts are under siege and how to strengthen evidence-based analysis in the public debate.

## 4 Technological change and society

Focus on the historical connections between science, technology, and society, and engagement with economic, legal and sociological perspectives to provide insights for the future.



Research excellence

23

ERC grants on a total faculty of 50 professors

Global community

1100

scholars from 75 countries from around the world

## Key stakeholders

The EUI aims to share knowledge and provide constructive solutions to the transnational challenges faced by citizens worldwide through academic research, executive education, and active relationships with policy makers and practitioners.

Local and international partnerships with other higher education and research institutions, public sector organisations, civil society actors, donors and the private sector contribute to furthering this aim. The EUI is proud of its many partnerships with leading organisations across different fields, from the European Commission to NATO, and from the Hertie School of Governance to Sciences Po.

In 2019 the EUI joined six other top-tier institutions to launch CIVICA, a pilot 'European University' funded by Erasmus+.

## Research and training

The EUI offers a unique international teaching and research experience, free from the bias of any single national perspective: the EUI is European and international by nature.

Max Weber Fellows

60

Europe's largest postdoctoral programme in the social sciences

The EUI is characterised by its thriving intellectual climate, rich in seminars, conferences, and events,

hosting leading academics, practitioners and policy-makers from around the world. Our professors are dedicated to doctoral supervision and research, as evidenced by our superior completion rates and high scholarly output.

Our training activities steadily evolve in character and reach. We offer masters, doctoral and postdoctoral training, as well as professional and executive education on the most pressing issues facing policy-makers and practitioners.

EUI graduates and alumni fellows have excellent career prospects. According to available data, 99 per cent of our alumni are employed:

- 69 % of our alumni are employed in academic positions
- 12 % work in international organisations
- 31 % of alumni are employed in senior positions, such as full professor or director-general

The EUI screens for quality

1/10

On average, 1 in 10 Ph.D. proposals is accepted

The Institute is also home to a top-class social sciences research library and European Documentation Centre, as well as the Historical Archives of the European Union (HAEU).

## What we offer

- Ph.D. programmes
- Post-doctoral programmes
- Master of Arts
- Executive training and summer schools



# Beyond doctoral training and research

For decades the Robert Schuman Centre has bridged research, policy-making and practice with applied research and important academic, institutional and government networks.

External Partnerships

around **100**  
formalised shared  
research and  
teaching initiatives

Global in reach, the new School of Transnational Governance focuses on policy-making beyond the state.

## Want to partner with the EUI?

✉ [external.relations@eui.eu](mailto:external.relations@eui.eu)

➦ [www.eui.eu](http://www.eui.eu)

🌐 [EuropeanUniversityInstitute](https://www.eui.eu)

🐦 [@EuropeanUni](https://twitter.com/EuropeanUni)

📷 [europeanuniversityinstitute](https://www.eui.eu)

Set up in

# 1972

by the six founding  
Member States of  
the then-European  
Communities

# 24

contracting  
member  
states

# 4

academic  
departments of  
Economics, History,  
Law and Political  
and Social Sciences

Research and  
administrative staff  
totaling more than

# 500

people



With the support of the  
Erasmus+ Programme  
of the European Union